

E@SYFILE FORM VIEWER FIX

If you are struggling to view older EMP501 forms or generally experiencing difficulty with the latest version of the e@syfile Forms Viewer, you may have seen the below error message.

e@syFile Form Viewer 1.3.1 - Update Required
File View Help

— □ ×

APPLICATION UPDATE REQUIRED

NOTE: In order to continue operations you need to
download the new version of this application.

SARS e@syFile Forms Viewer with version 1.3.4 is now
available.

[Download Now](#)

e@syFile Form Viewer 1.3.1 - Update Required
File View Help

— □ ×

APPLICATION UPDATE REQUIRED

e@syFile Forms Viewer

Download of application version 1.3.4 failed. Referenced error: path is not defined

OK

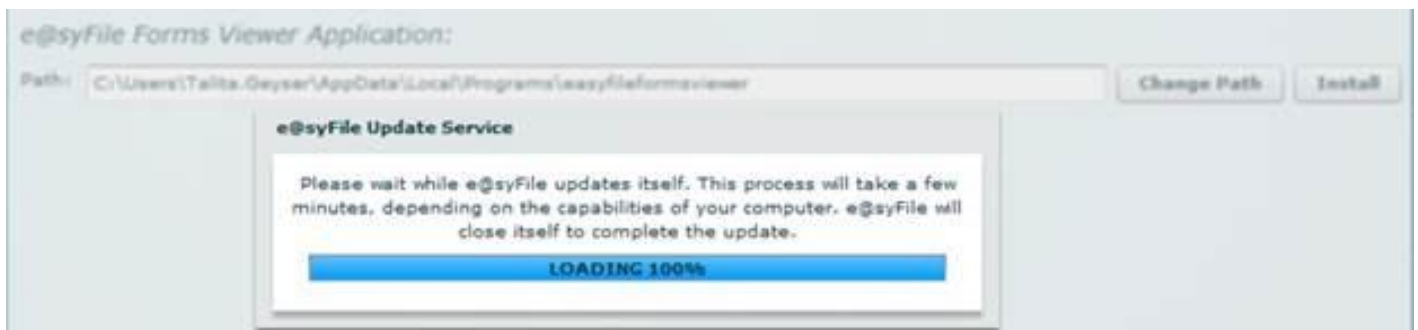
REMEDY FOR THE ERROR

Taxpayer must make a backup of e@syFile and then follow the below steps:

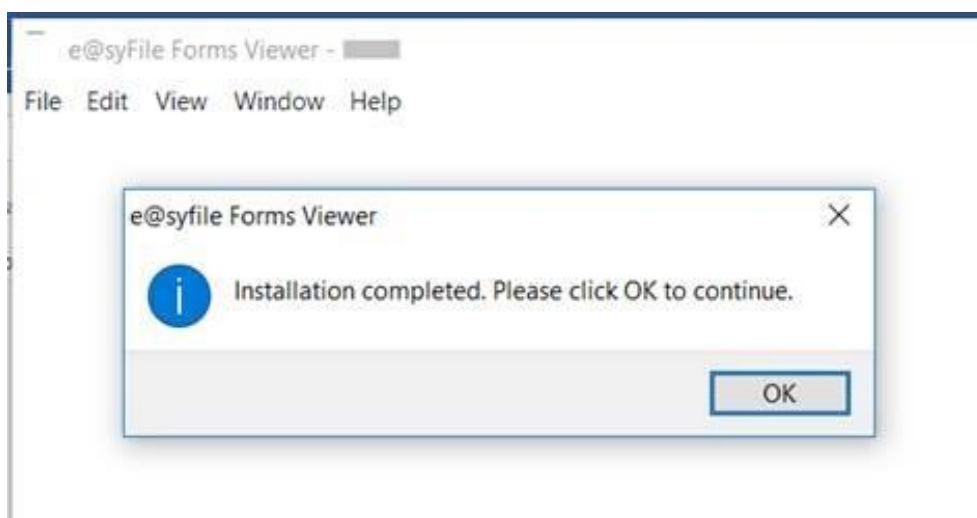
1. Log on to e@syFile, and navigate to System Configuration under Utilities.
2. Click on Install next to e@syFile Forms Viewer Application.



3. Once the Forms Viewer download completed, the installation should continue automatically.



4. Click on OK and close the Forms Viewer after the installation completed successfully.



5. If you still get this error:



6. Then run the Installer on your desk top and try again.



27 September 2022