

#RSABUDGET2025

Kgatiso e e kopanetsweng ke Lefapha Bosetšhaba la Matlotlo le Ditirelo Tsa Lekgetho tsa Aforika Borwa [#RSA Budget](#) | [#RSABudget2025](#)

TSHEDIMOSETSO

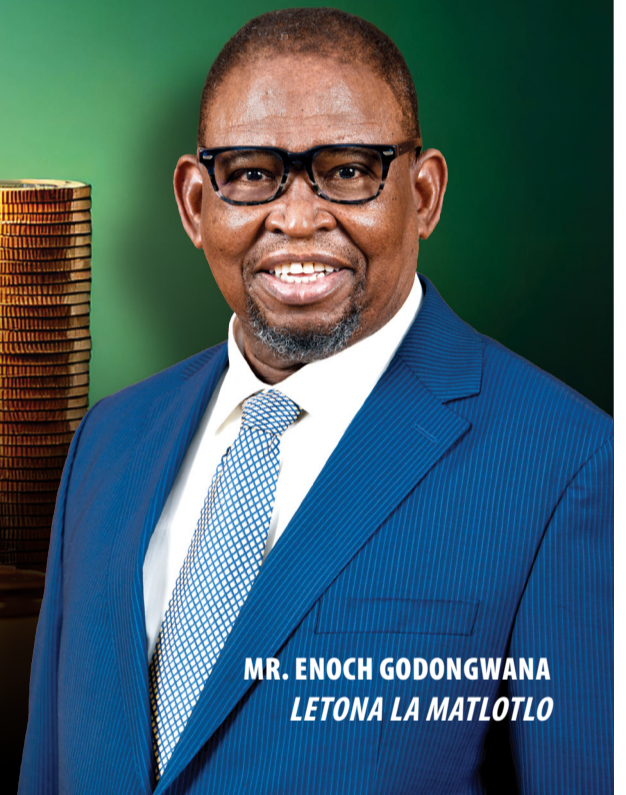
TEKANYETSO-KABO KE ENG?

TEKANYETSO-KABO E RULAGANNNGWA JANG?

Ngwaga le ngwaga ka Tlhakole, Tona ya Matlotlo o rebola tekanyetsokabo ya bosetšhaba, mo a tlahosang lenaneo la puso la go dirisa madi, la lekgetho le la dikadimo mo dingwageng tse tharo tse di tlang. Tekanyetsokabo ya bosetšhaba e kgaoganya madi magareng ga mafapha a bosetšhaba, diporofense le bommasepala.

1. Dikaelo tse di tlahosang dilo tse di tlokegang mo tekanyetsokabong di romelwa go mafapha
2. Mafapha a beela kwa pele mananeo a tsone mme a kwala di-thulaganyo tsa go dirisa madi le maikemisetso a go aba ditirelo
3. Ditshitshinyo tsa tekanyetsokabo di romelwa kwa Lefapheng la Bosetšhaba la Matlotlo gore di sekasekiwe
4. Dikomiti tsa mafapha a a farologaneng tsa Bakaedi-Bagolo di akanyetsa go aba ditshitshinyo
5. Dikatlengiso tsa tekanyetsokabo di dirwa mo Komiting ya Matona
6. Seteitemente sa Pholisi ya Tekanyetsokabo ya Paka e e Bogareng se bontsha Tekanyetso e e ka solofelwang
7. Dikabo tsa makgaolagang di swediwa kwa Kabineteng
8. Ditokumente tsa tekanyetsokabo di a baakannwa
9. Tekanyetsokabo ya Konokono e a itsisiwe
10. Palamente e sekaseka le go amogela Tekanyetsokabo
11. Tekanyetsokabo e newa Poresidente gore a e saene le gore e nne mo molaong

GO BULA TSELA YA KGOLO E E AKARETSANG LE GO ITSETSEPELA GA IKONOMI



MR. ENOCH GODONGWANA
LETONA LA MATLOTLO

Gore Aforika Borwa e kgone go rarabolola dikgwetlho tse dikgolo tsa loago le go tokafatsa boleng jwa botshelo mo nageng, e tlhoka ikonomi e e golelang ka bonako le go tlhama ditiro tse di oketsegileng.

Tekanyetsokabo ya 2025 e dira dipeeletso tsa togamaano go fitlhelela kgolo ya ikonomi ka bonako, mme e tlhomile mogopolo mo diporojekeng tsa mafaratlhatlha tsa motlakase, diporo, metsi le tsa dipalangwa.

Le fa gone tiragatso ya ikonomi e ne e se maatla ka 2024, go lebelega fa go tla nna botoka go simolola ka 2025 go ya pele. Mo dingwageng tse tharo tse di tlang, go lebeletse gore ikonomi e gole ka diperesente tse 1.8 ka ngwaga, mme tiragatso ya diphetogo e ka oketsa kgolo. Lefapha la motlakase le la dipalangwa le dira kgatelopele, mme diphetogo tse disha di lebagane le go tlhomama le go tokafadiwa ga kabo ya



Madi a a ka nnang triliyoni tse R103 a tla dirisiwa mo dingwageng tse tharo tse di tlang mo diporojekeng tse di farologaneng tsa mafaratlhatlha”

metsi. Madi a a ka nnang triliyoni tse R1.03 a tla dirisiwa mo dingwageng tse tharo tse di tlang mo diporojekeng tse di farologaneng tsa mafaratlhatlha.

Go tsibogela dikgatelelo tse disha le tse di tsweleng tsa ditshenyegelo, tekanyetsokabo ya 2025 e akantsha go tlatlhosa selekanyo sa lekgetho fela thata. Se se botho-kwa ke gore, puso e ile ya tsaya tshwetso e e bokete ya go tlatlhosa selekanyo sa lekgetho la dithekiso [value-added tax (VAT)]

ka diperesente di le 2, go nna diperesente di le 17. Puso e tla tswelela e tshegets batho ba ba dikobo di magetleng le ba ba sotlegang ka dikabo tse dikgolo tsa thuto, tlhokomelo ya kalafi le tlhabololo ya loago. Mphiwafela ya nakwana ya loago ya COVID-19 e tla atolosiwa go fitlha go Mopitlwe 2026, le dikabo tsa nakwana tsa tshireletso ya loago le tsa mananeo a go thapa batho ka 2026/27 le 2027/28. Gape puso e beetse madi kwa thoko a botsa-

maisi jwa masetlapelo le a diporojeke tsa mafaratlhatlha mo pakeng ya magareng.

Go fokotsa sekoloto go tla feleletsa go fokoditse madi a puso e a dirisang go duela sekoloto seo. Mo tsamaong ya nako, phokotsego eno ya merokotso e e duelwang e tla thusa puso go laola madi a setšhaba botoka le go e thusa go godisa ikonomi. Fa morokotso o o duelwang mo sekolong o ntse o fokotsega, go tla nna le lotseno lo lo oketsegileng lo puso e ka lo dirisang mo dikarolong tse di jaaka thuto, tlhokomelo ya boitekanelo le mafaratlhatlha.

Go tloga ka 1 Sedimonthole 2024, Aforika Borwa e neilwe boporesidente jwa G20. Boporesidente jwa ngwaga o le mongwe jwa Aforika Borwa bo tllile go tlhoma mogopolo mo go rotloetseng kgolo ya ikonomi e e akaretsang le e e tsepameng, le go lwa kgalhanong le khumanego. Go lebeletse gore ofisi ya poresidente e rotloetse ditiro tsa ikonomi, segolobogolo mo ditheong tse di jaaka bojanala le go amogela baeng.



PEELETSO YA MAFARATLHATLHA GO TSHEGETSA KGOLO

Mo dingwageng tse tharo tse di tlang, peeletso mo setheong sa setšhaba le sa poraefete e tla oketsega ka peresente ya GDP, mme seno se tla bo se bontsha kgatelopele mo maitekong a naga a go rotloetsa kgolo ya ikonomi.

Le fa go ntse jalo, kgolo e e bonako e a tlhokega go rarabolola dikgwetlho tse di sa kgaotseng tsa kgolo e e kwa tlase, bothoka tiro jo bo kwa godimo le khumanego.

Puso e diragatsa diphetogo go oketsa peeletso ya mafaratlhatlha le go kgotha-

letsa setheo sa poraefete go nna le seabe. Diphetogo tseno di dira gore go nne motlhofo gore khampani ya poraefete e dirisane le setheo sa puso go rebola diporojeke, go tokafatsa tsela e puso e dirang dipolane tsa mafaratlhatlha ka yone, le go tokafatsa tsela e mafapha le ditheo tsa puso di rwalang maikarabelo ka yone. Ka kakaretso, diphetogo tse di akantshitsweng tsa mafaratlhatlha di tla tokafatsa togamaano, thuso ya madi le tiragatso ya diporojeke tsa mafaratlhatlha, go tlhomamisa gore go na le thebolo e e bonako ya mafaratlhatlha a a tshegetsang



...kabo e e bonako ya mafaratlhatlha e tla rotloetsa kgolo, le go tlhama ditiro”

kgolo ya ikonomi, a a atolosang phitlhelelo ya ditirelo tsa motheo le a a thamang ditiro.

Lefapha la bosetšhaba le tlile go dirisa triliyoni di le R103 mo mafaratlhatlheng mo dingwageng tse tharo tse di tlang. Peeletso ya mo ikonoming ya mafaratlhatlha, segolobogolo ke e e dirwang ke ditlamo tsa puso, e ikarabelela diperesente di le 81.5 tsa phopoletso ya paka ya magareng. Madi ano a tlile go dirisiwa go atolosa bokgoni jwa go tlhagisa motlakase, go tlhabolola le go atolosa neteweke ya dipalangwa, le go tokafatsa ditirelo tsa kgeleloleswe le metsi. Dithulaganyo tsa ditirelo tsa loago, go akaretsa tlhokomelo ya boitekanelo le thuto, di ikarabelela diperesente di le 15.5 tsa palogotlhe ya madi a a tla dirisiwa. Dingwe tsa diporojeke tseno di tla tlhoka madi a mangwe a a oketsegileng go tswa kwa babeleetsing ba poraefete, fa madi a mangwe a tla tswa mo dikhampaning tsa poraefete gammogo le ditheo tsa puso.

DINTLHAKGOLO TSA TEKANYETSOKABO YA 2025

1. Tuelo ya loago – go akaretsa tlhabololo ya tikologo, mananeo a go thapa, tshireletso ya boitekanelo, thuto le loago – e tla dira palogare ya diperesente di le 61 tsa ditshenyegelotse tse di se nang morokotso mo pakeng e e bogareng
2. Mphiwafela ya leruri ya loago e tla oketsega go nna kwa godimo ga inoleishene mme mphiwafela ya nakwana ya loago ya COVID-19 e tla tswelela go fitlha ka 31 Mopitlwe 2026.
3. Tlhabololo ya ikonomi ke sengwe se se golang ka bonako ka palogare ya diperesente di le 8.1 ka ngwaga, mme seno se dirwa ke dikabo tse di kwa godimo go sekae tsa mafaratlhatlha.
4. Dikakantso tsa lekgetho la konokono di akaretsa go tlhatlhosha VAT ka diperesente di le 2 go nna diperesente di le 17, le go oketsa dijo tse dingwe mo lenaaneng la dilwana tse di sa tsennngweng lekgetho, mme lekgetho la leokwane le tla nna le sa fetoga.
5. Ka 2025/26, puso e tla tsepamisa sekoloto ka diperesente di le 76.1 tsa GDP.
6. Go lebeleletse gore kgolo ya mmatota ya ikonomi e tlhatlhogele go diperesente di le 1.9 ka 2025, go tswa go diperesente di le 0.8 ka 2024.
7. Letsholo la go rola tiro pele ga nako le abetswe dibilione tse R11 ka 2025/26 le 2026/27 go fokotsa palo ya badiri ba ba seng ba bothlokwa mo mafapheng a bosetšhaba le a porofense.

BULA TSEBE E E LATELANG



GO ROTLOETSA KGOLO YA IKONOMI KA DIPHETOGO TSE DI RULAGANTSWENG

Ikonomi ya Aforika Borwa e lebane le dikgwetlho tse di jaaka go kgaolwa ga motlakase, thulaganyo ya dipalangwa e e bokoa le dilekanyo tse di kwa godimo tsa bokebekwa le bosenyi, tse di dirileng gore batho ba se ka ba nna le tshepo mo ikonoming mme dilekanyo tseno di fokoditse go ntshiwa ga dikuno.

Legato la ntlha la Operation Vulindlela le ikaeletse go fokotsa go kgaolwa ga motlakase, go baakanya thulaganyo ya dipalangwa, go fokotsa ditlhwatlhwa tsa data, go oketsa kabo ya metsi, go ngoka batho ba ba itseng tiro le go tshegetsana bojanala. Diphetogo tse di tlang di tlile go tlhoma mogopolo mo kgannyeng ya gore go nne motlhofo go batla tiro le go hira batho – segolobogolo ka go rarabolola bothata jwa go sa lekanekane ga mafelo, mme go dirisiwa ditropono go rotloetsa ditiro tsa ikonomi le go tokafatsa kabo ya ditirelo tsa masepala.

MANaneo A GO THAPA SETŠHABA A NEWA THUSO

Le fa gone palo ya batho ba ba thapilweng e oketsegile go nna dimilione tse 16.9 mo kwatireng ya boraro ya 2024, selekanyo sa bothoka tiro mo Aforika Borwa se tswelela se le kwa godimo thata go diperesente di le 32.1.

Mananeo a go thapa setšhaba [Public employment programmes (di-PEP)] a bothlokwa thata go mekamekana le bothoka tiro jo bo tswelelang bo le kwa godimo.

Di-PEP di tlile go nwa madi a a oketsegileng a a kana ka dibilione di le R8.8 ka 2025/26. Baamogedi ba konokono ba akaretsa:

- **Lefapha la Thuto ya Motheo:** Dibilione tse R5.8 go matsholo a go thapa a lefapha la thuto ya motheo.
- **Lefapha la Metshameko, Botaki le Setso:** Dibilione tse R0.35 go rotloetsa indaseteri ya bothlhami.



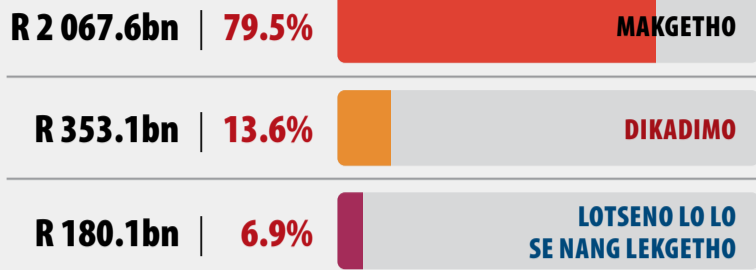
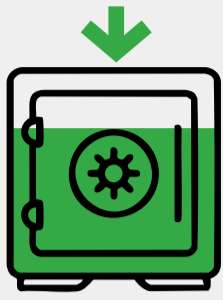
- **Lefapha la Kgwebo, Madirelo le Kgaisano:** Dibilione tse R1.3 go Letlole la Ditiro Tsa Loago.
- **Lefapha la Bosetšhaba:** Dibilione tse R0.45 go Lenaneo la Ditiro mo Ditoropong.
- **Setheo sa Bosetšhaba sa Tlhabololo ya Basha:** Dibilione tse R0.55 go Ditirelo Tsa Bosetšhaba Tsa Basha.
- **Lefapha la Ditiro le Badiri:** Dibilione tse R0.35 go matsholo a a jaaka Botsamaisi jwa Bosetšhaba jwa Neteweke ya

go Bula Ditsela, Letlole la Thekenoloji le dithuto tiro.

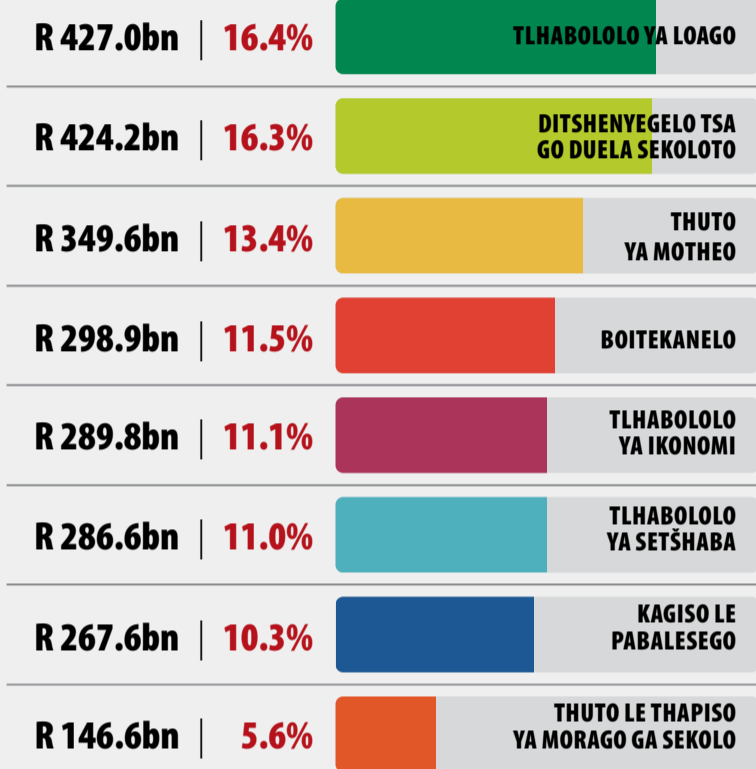
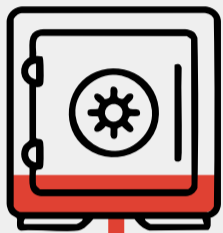
Mo godimo ga moo, Lefapha la Bosetšhaba la Matlotlo le Ofisi ya Poresidente, di dirisane le ditheo tse dingwe tsa puso, di simolotse go sekaseka ka bothlalo mananeo a mmaraka wa badiri o o dirang, di-PEP le thulaganyo ya tshegetso ya loago go tokafatsa bokgoni le tirosentle.

Ka maiteko ano, puso e solofela gore e tla dira kgatelopele e e bothlokwa go fokotsa bothoka tiro.

1 METSWEDI YA LOTSENO LWA PUSO KA 2025/26

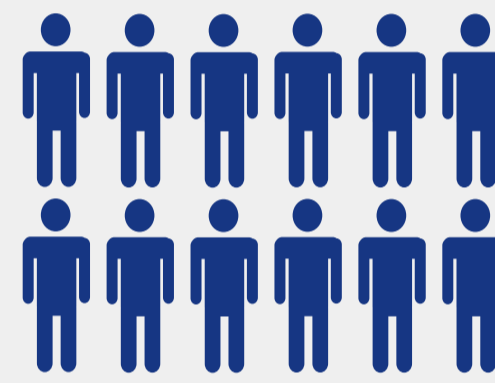


2 DITSHENYEGELO TSA PUSO KA 2025/26



3 MPHIWAFELA YA LOAGO

	2024/25	2025/26
MPHIWAFELA YA PUSO YA BATSOFE	R2 185	R2 335
MPHIWAFELA YA BAGALE BA NTWA	R2 205	R2 355
MPHIWAFELA YA BATHO BA BA NANG LE BOGOLE	R2 185	R2 335
MPHIWAFELA YA TLHOKOMELO YA BANA BA BA SE NANG BATSADI	R1 180	R1 260
MPHIWAFELA YA BATHO BA BA IKAEGILENG KA TLHOKOMELO	R2 185	R2 335
MPHIWAFELA YA GO TSHEGETSA BANA	R530	R580
MPHIWAFELA YA KABO YA THUSO	R530	R580



19.3 milione
ya batho ba tla amogela mphiwafela ka Mopitlwe - 2028

Tekanyetsokabo e tlike go oketsa boleng jwa mphiwafela ya leruri gore e nne kwa godimo ga infoleishene.

4 TEKANYETSOKABO E TSHEGETSA KGOLO YA IKONOMI, GO TLHAMIWA GA DITIRO LE TLHABOLOLO YA LOAGO



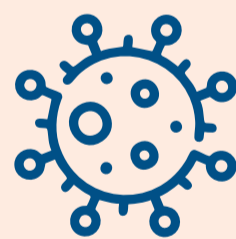
Diperesente di le 1.9

tsa kgolo ya mmatota ya GDP di lebeletswe ka 2025



Diperesente di le 61

tsa palogotlhe ya ditshenyegelo tsa puso di abetswe tlhabololo ya setshaba, mananeo a go thapa, boitekanelo, thuto le tshireletso ya loago mo dingwageng tse 3 tse di tlang



Dibilione di le R35.2

tsa madi a mangwe a a ntshiwang go atolosa mphiwafela ya nakwana ya loago ya COVID-19 go fitlha go Mopitlwe 2026



Dibilione di le R885.7

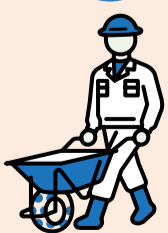
di abelwa ditirelo tsa motheo, matlo le dipalangwa tsa botlhe, le go fetolwa ga mafelo le tlhabololo ya ditoropo mo dingwageng tse 3 tse di tlang



Dibilione di le R905.9

tsa mananeo a botlhagisi, dikgwebopotlana le a go thapa setshaba mo dingwageng tse 3 go rotloetsa ikonomi

5 MANANEO A GO THAPA SETSHABA

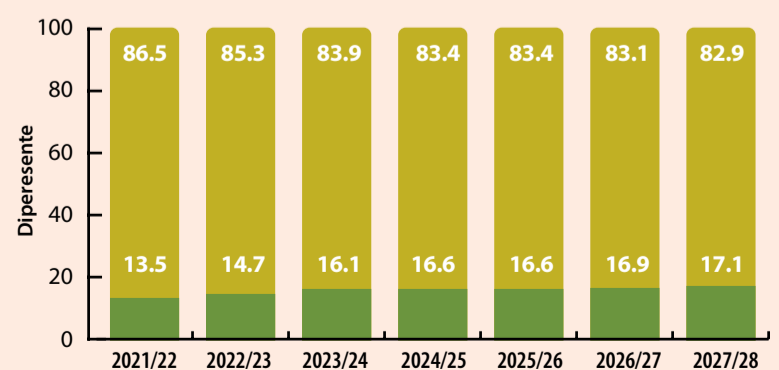


Dibilione di le R8.8

e abetswe mananeo a go thapa setshaba ka 2025/26, go tshegetsa tsela ya go itshedisa, go rotloetsa diphetogo tsa dithulaganyo, le go kgontsha go tlhamiwa ga ditiro

6 DITUELO TSA PUSO TSE DI SE NANG MOROKOTSO LE TSE DI NANG LE MOROKOTSO JAKA KABELANO YA PALOGOTLHE YA DITSHENYEGELO

■ Ditshenyegelo tse di se nang morokotso ■ Dituelo tse di nang le morokotso



* Ditshenyegelo tse di se nang morokotso ke palogotlhe ya ditshenyelo tsa puso tse di sa akaretseng dituelo tsa sekoloto tse di nang le morokotso.

DITSHISINYO TSA LEKGETHO LA 2025



LEKGETHO LA LOTSENO LWA MOAGI

DIPHETOGO TSA LEKGETHO LA LOTSENO LWA MOAGI DI GO AMA JANG?

Tekanyetsokabo ya 2025 e fetola dikoketso le diphokoletso tsa lekgetho la lotseno lwa moagi gore di thuse ka ditlamorago tsa inforeishene. Madi a motho ka bonosi a ka a amogelang a a tlhokegang pele ga gore a duele lekgetho mo ngwageng wa lekgetho o o simololang ka 1 Mopitlwe 2025 go ya go 28 Tlhakole 2026 ke a a latelang:

DIKAROLO TSA LEKGETHO	NGWAGA WA LEKGETHO: 2024/25	NGWAGA WA LEKGETHO: 2025/26
Ba ba dingwaga tse di ka fa tlase ga 65	R95 750	R100 350
Ba ba dingwaga di le 65 go ya go 74	R148 217	R155 350
Ba ba dingwaga tse di fetang 75	R165 689	R173 650

Diphokoletso tsa lekgetho go moduela lekgetho di ntse jaana:

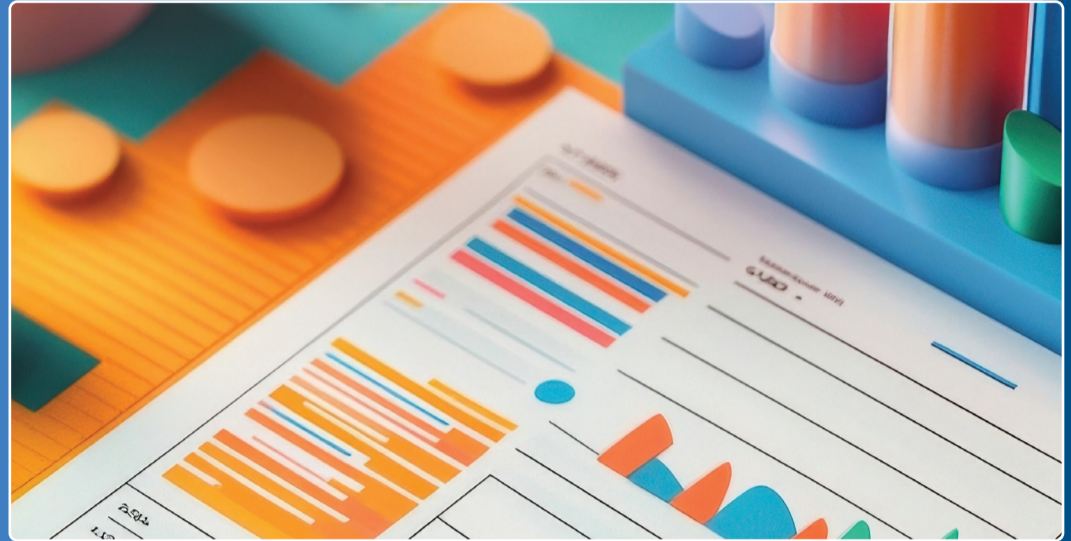
DIPHOKOLETSO TSA LEKGETHO	NGWAGA WA LEKGETHO: 2024/25	NGWAGA WA LEKGETHO: 2025/26
Tsa konokono (batho botlhe)	R17 235	R18 063
Tse di kgolwane (ba dingwaga tse 65 le go feta)	R9 444	R9 900
Tse dikgolo (ba dingwaga tse 75 le go feta)	R3 145	R3 294

MAKGETHO A BOLEO

TLHATLHOSO YA LEKGETHO LA BOJALWA LE MOTSOLO

Lekgetho le le kgethegileng la bojalwa le tla oketsega ka diperesente di le 6.83 mme la motsoko le tla oketsega ka diperesente tse di magareng ga 4.83 go tloga ka letlha le se tla bong se itsisiwe ka lone ka 19 Tlhakole 2025.

	E OKETSEGA KA NGE:
Biri ya momela	16c go khene ya 340ml
Beine e e se nang sukiri	28.5c go botlolo ya 750ml
Beine e e nang le sukiri	48c go botlolo ya 750ml
Beine e e nang le asiti	91.5c go botlolo ya 750ml
Disaeda le majalwa a a dirilweng ka matute a maungo	16c go khene ya 340ml
Bojalwa jo bo bogale	R6.04 go botlolo ya 750ml
Disekerete	R1.05 go pakete ya 20
Dithobane tsa motsoko o o thutafaditsweng	79c go pakete ya 20
Sekerete ya motsoko	R1.18 go 50g
Motsoko wa peipe	51c go 25g
Disekara	R8.60 go 23g
Motsoko wa mkgwa wa ileketeroniki wa motswako wa nikitini le o e seng wa motswako wa nikitini	14c go 1ml



DIPHETOGO TSA LEKGETHO

LEKGETHO LA LOTSENO: BADUELA LEKGETHO

Lekgetho le le duelwang ke baduela lekgetho mo ngwageng wa lekgetho magareng ga 1 Mopitlwe 2025 go ya go 28 Tlhakole 2026.

Lotseno lo lo nang le lekgetho (R)	Selekanyo sa Lekgetho (R)
R0 go ya go R248 600	18% ya lekgetho la lotseno
R248 601 go ya go R388 400	R44 748 + 26% ya lekgetho la lotseno lo lo kwa godimo ga R248 600
R388 401 go ya go R529 200	R81 096 + 31% ya lekgetho la lotseno lo lo kwa godimo ga R388 400
R529 201 go ya go R694 500	R124 744 + 36% ya lekgetho la lotseno lo lo kwa godimo ga R529 200
R694 501 go ya go R885 400	R184 252 + 39% ya lekgetho la lotseno lo lo kwa godimo ga R694 500
R885 401 go ya go R1 875 100	R258 703 + 41% ya lekgetho la lotseno lo lo kwa godimo ga R885 400
R1 875 101 le go ya godimo	R664 480 + 45% ya lekgetho la lotseno lo lo kwa godimo ga R1 875 100

Source: National Treasury

LEKGETHO LA DITHEKISO

Selekanyo sa VAT se tla tlhatlhoga go tloga go 15% go ya go 17% go simolola ka 1 Moranang 2025.

LEKGETHO LA DITHOTO

Tafole ya lekgetho la dithoto le fetotswe go tloga fela ka 1 Mopitlwe 2025. R1 210 000 ya ntlha ya boleng jwa thoto e e rekilweng e ka se tsenngwe lekgetho la dithoto. Tafole ya lekgetho le lesa e ka tsela e e latelang:

Boleng jwa Thoto	Lekgetho la Thoto
R0 go ya go R1 210 000	0% ya boleng jwa thoto
R1 210 001 go ya go R1 663 800	3% ya boleng jwa thoto jo bo kwa godimo ga R1 210 000
R1 663 801 go ya go R2 329 300	R13 614 + 6% ya boleng jwa thoto jo bo kwa godimo ga R1 663 800
R2 329 301 go ya go R2 994 800	R53 544 + 8% ya boleng jwa thoto jo bo kwa godimo ga R2 329 300
R2 994 801 go ya go R13 310 000	R106 784 + 11% ya boleng jwa thoto jo bo kwa godimo ga R2 994 800
R13 310 001 le go ya godimo	R1 241 456 + 13% ya boleng jwa thoto jo bo kwa godimo ga R13 310 000

Source: National Treasury

Scan this QR code for the PDF version of this People's Guide to the Budget



MAIKUTLO A GAGO A BOTLHOKWA

A O FITLHELETSE KAEDI YA BATHO YA TEKANYETSOKABO E LE MOSOLA?

Re aga re batla ditsela tse disha tsa go tokafatsa kaedi eno, mme re ka leboga fa o ka re romelela ditshwaelo le dikakantsho go Media@treasury.gov.za